



EDWARD HAND MEDICAL MUSEUM

Preserving the History of the Healing Arts

Summer 2019 e-newsletter

WE'RE MOVING! HELP WANTED !

We have tasks for all skills and interests.

No heavy lifting required.

- We need volunteers to help catalog and organize the artifact collection. No prior cataloging or museum experience required! We will provide training. But we do need some medical and historical professionals with knowledge of various medical equipment (podiatry, obstetrics/gynecology, ophthalmology, orthopedics, surgery, dentistry, cardiology, anesthesia, otolaryngology, pediatrics, urology, etc.) to ensure that artifacts are labelled and cataloged correctly in preparation for the move.
- We also need volunteers to scan, catalog and store archival materials. This task will involve updating or creating individual catalog records for the museum's photographs and documents, as well as scanning the archival materials and storing them properly.
- And we hope to find a few tech-savvy volunteers to help organize and update the museum's computer and cameras.

contact: (717) 224-5119, or
executivedirector@edwardhandmedicalmuseum.org



From the Executive Director: Hannah Lerew

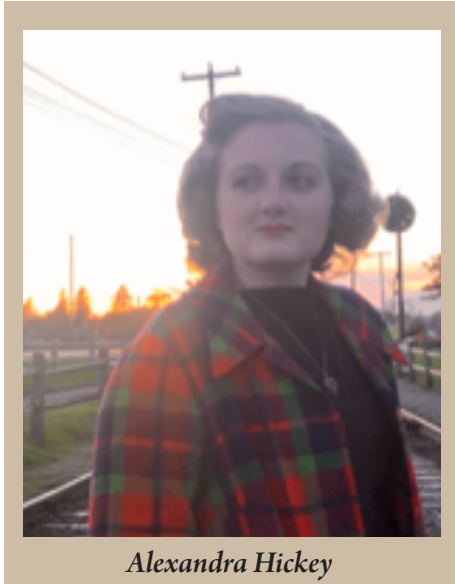
Last year our efforts were focused on virtual upgrading, with the development of our new website, branding and name change. This year, we are working on physical improvements. The biggest, and most exciting, change will be our upcoming move out of Burle Business Park to our new home at 410 N. Lime street. This change will allow our museum to grow, both in a physical sense and in the community. We will be doubling our exhibit space and adding to our artifact collection, with the addition of Barton Halpern's ophthalmology collection and Lynn Dolan's dental collection.

In preparation for the big move at the end of the year, we have been busy cataloging and organizing our collection. This includes making separate, searchable databases for the library and archive collections. The combination of the new database and the new space will allow these collections to become research tools for historians, students and members of the Lancaster community.

Some of our noteworthy artifact donations this year have included an optician's travel pharmacy, prohibition-era prescriptions for whiskey, and some promotional thimbles for Zeamer's pharmacy. These, and many more of our new donations, will be displayed in new museum space.

Our biggest fundraising effort will be participating in this year's Extraordinary Give, which is set to take place on November 22, 2019. With such a generous turnout last year, we are hoping to expand our efforts during Lancaster's biggest day of giving. More details to follow!

Meet our summer interns:



Alexandra Hickey

Hello! I'm Alexandra Hickey, a summer intern at the Edward Hand Medical Museum. I am a rising junior at Franklin & Marshall College in Lancaster, Pennsylvania. I am majoring in public health and am looking to enter either a physician assistant or a midwifery program after graduation. Outside of college, I love to swing dance, shop at antique/vintage stores, and play with dogs. I am working on two projects with the museum this summer in conjunction with a F&M Hackman Scholarship which is awarded to students for faculty-mentored summer research. One project, for EHMM board member and F&M professor Dr. Louise Stevenson, is creating a digital transcription of a 1906 journal written by a local physician-surgeon, Dr. John Light Atlee. The journal is a compilation of notes and illustrations of cases he observed while visiting the forerunner to the Mayo Clinic as well as several teaching hospitals in Chicago. The second project is working with the museum to document history of now-closed St. Joseph's Hospital. This involves conducting interviews with former staff and creating a resource binder of documents for future use.

Jocelyn Dialectos is a senior at the Pennsylvania State University. She is majoring in Biobehavioral Health, with the intention of going to medical school after graduation.

This summer, Jocelyn is doing research on the history of diabetes mellitus. The research is especially focused on how the disease was diagnosed and treated in Lancaster. She is examining what symptoms led to a diagnosis, which medications and treatment plans were advised, what factors were believed to cause the disease, and how the understanding of diabetes has changed over the years. The research also includes prominent figures from Lancaster who were involved in the evolution of diabetes management. This project starts with the colonial period and continues until present day.



Jocelyn Dialectos

**LEND A HAND, HEAD, AND HEART
VOLUNTEER NOW**



EDWARD HAND
MEDICAL MUSEUM

*From the Editor,
Joseph W. Lahr, MD:*

This summer we have decided to post a digital-only newsletter to announce and explain the complexity of our impending move. The new location will be more accessible and allow us to display more of the collection while providing space for research.

In this newsletter we are also introducing our amazing interns.

We hope that all of this exciting activity will encourage you to help, volunteer, visit, and support our work.